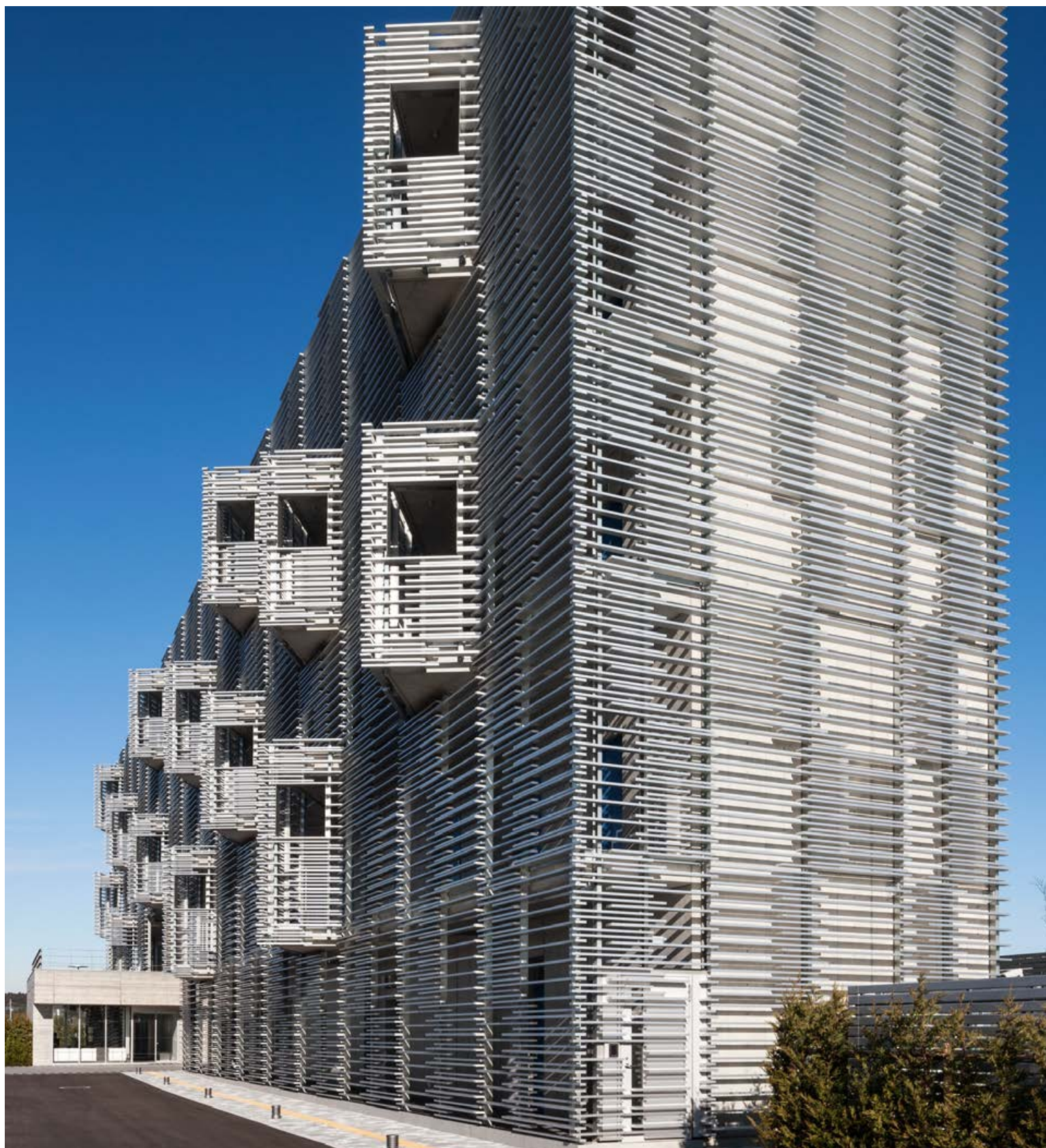


selected work





# i-House Dormitory







Client:  
Location:  
Completion: 2016Area:  
Design Architect:  
Arch't of Record:

Josai International University  
Togane, Japan  
28,500sf  
Studio SUMO  
Obayashi Corporation

# i-House Dormitory





A dormitory and international center for approximately 140 international students efficiently houses, educates, and integrates a student body that is both culturally and economically diverse through a collection of shared public spaces and rooms that range from singles and doubles with private baths, to rooms sleeping four with shared bathing facilities. The building is sited along the main access road to the university on the edge of an expanse of rice fields. It is comprised of a 9-meter wide dormitory bar that hovers over the international center that projects out to engage the landscape. One enters off the campus road through a void between the two programs as a louvered surface interspersed with projecting balconies masks the exterior walkways that serve the dormitory rooms facing out over the rice fields beyond. The provision of shared spaces, the walkway and balcony system expand the compressed living space into the outdoors.

# i-House Dormitory



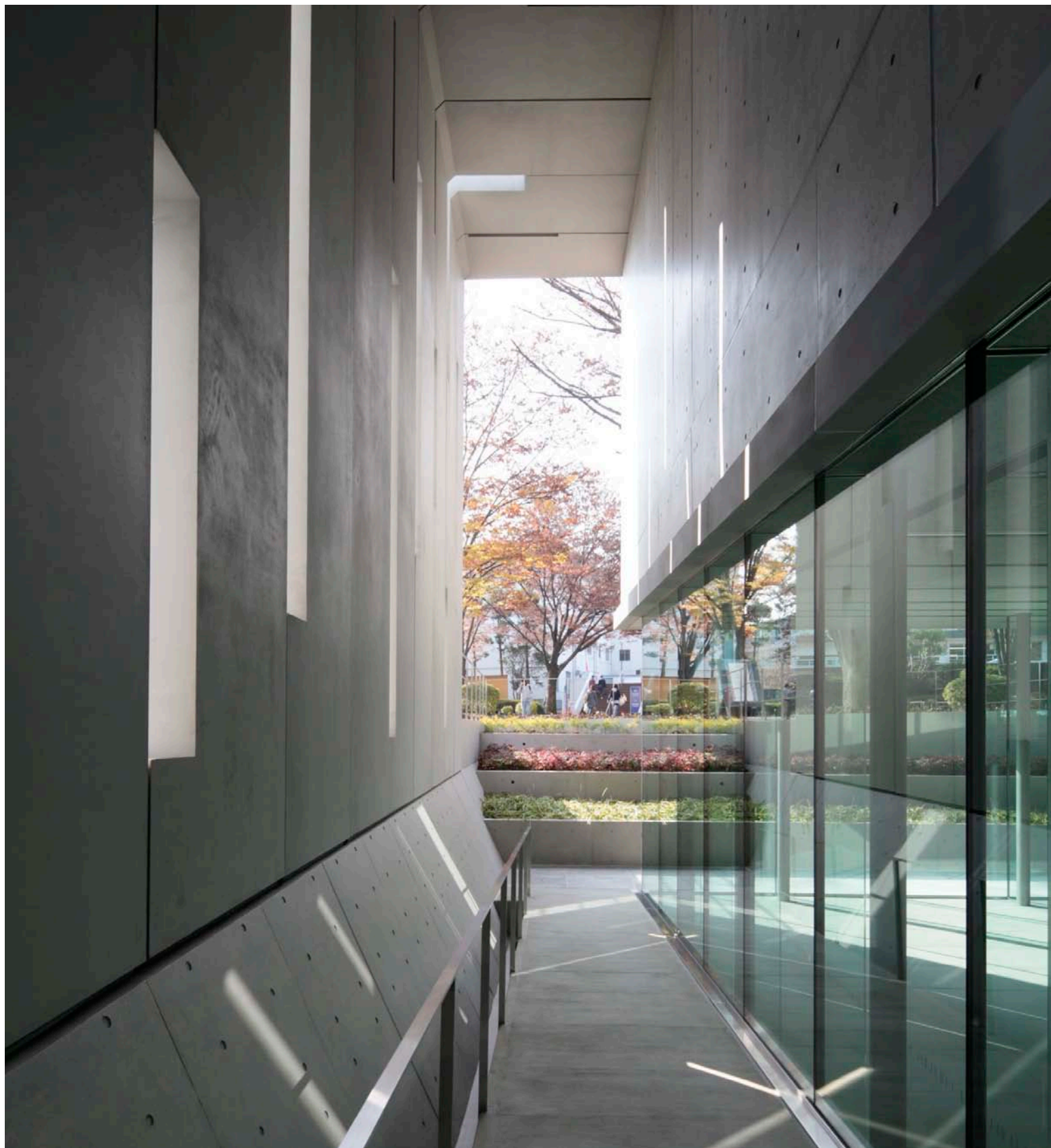




# i-House Dormitory







# Mizuta Museum







Client:	Josai University
Location:	Sakado, Japan
Completion:	2012
Area:	7,000sf
Design Architect:	Studio SUMO
Arch't of Record:	Obayashi Corporation
Awards:	Award of Excellence - 2012 NY State AIA Design Awards Award of Merit - 2012 NY City AIA Design Awards

# Mizuta Museum





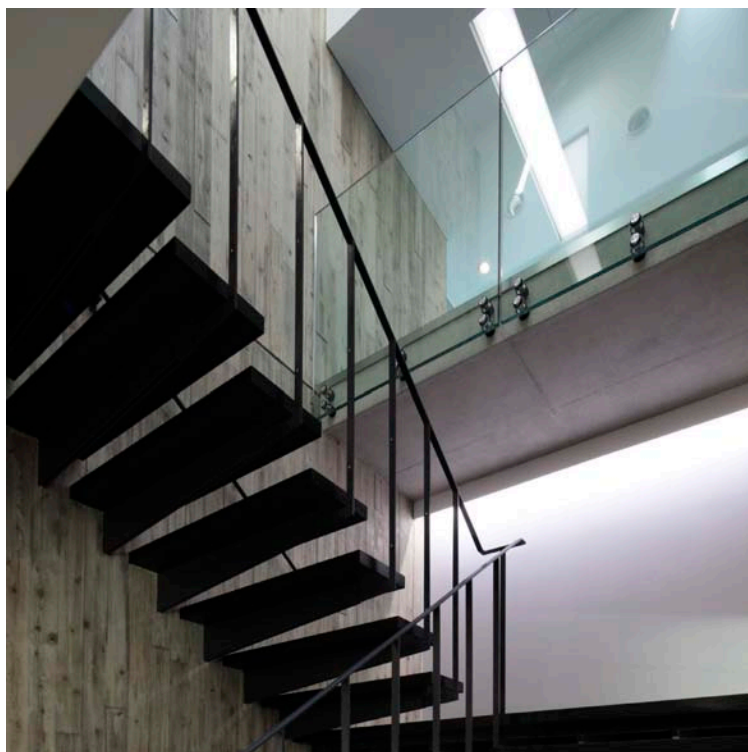


The Mizuta Museum of Art houses a valuable Ukiyo-e collection while functioning as an educational museum and village cultural space. The design of the museum consists of a highly controlled black box gallery for Ukiyo-e and a white box gallery for contemporary art above offices and a glass box public incubator that merges with the landscape. The building ramps up to the galleries and down a half level to the incubator and landscape. Both sheltering and open, the building exterior is a concrete shell that enfolds the galleries to form an environmental buffer as it carves into the ground and merges with the landscape. The shell design is comprised of pre-cast concrete L-shaped sections with a randomized openings. The building front and rear facades reveal the building section. Left exposed at the rear, at the building front, the section is capped by a lattice of plants and wood that will grey over time.

# Mizuta Museum







# Mizuta Museum



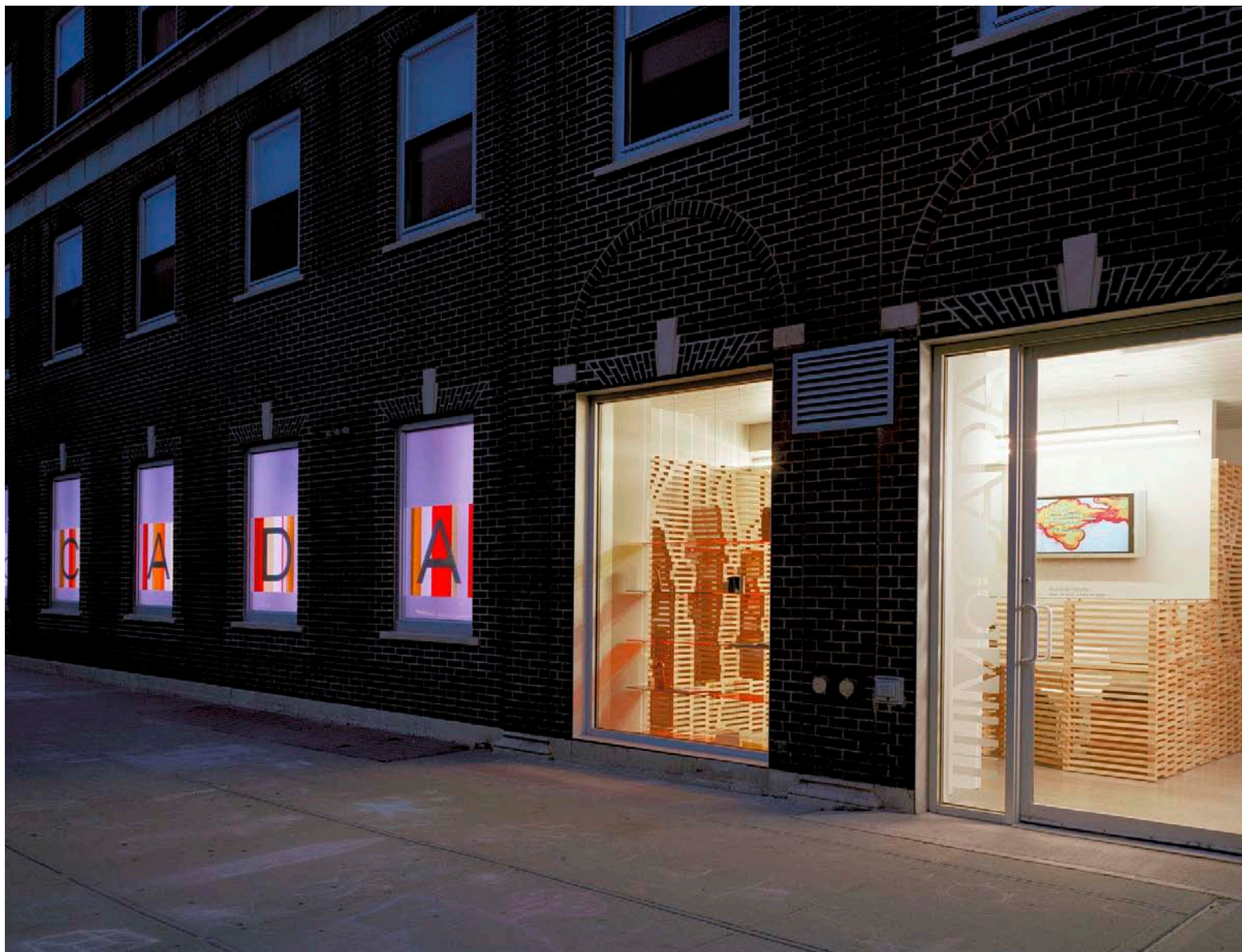




# MoCADA Bklyn







Client:	MoCADA / BAM Local Development Co.
Location:	Brooklyn, NY
Completion:	2007
Area:	2,000sf
Awards:	2008 Brooklyn Builds Awards - Best Cultural Institution

# MoCADA Bklyn







MoCADA/The Museum of Contemporary African Diasporan Arts is located in the BAM cultural district in Fort Greene and is sited in a linear space at the ground floor corner of 80 Arts Building. The design of the museum consists of the museum identity projected from light box windows, the reception glass box with diaspora map, offices and a flexible gallery. Entering from the street, a map of the African diaspora is spatialized in both two and three dimensions. Constructed from over 2,500 pieces of stacked ash, the reception furnishings are at once display wall, reception desk, and office screen. In the gallery, full-height display walls pivot to spatial reconfigure from one large space to up to six smaller compartmentalizations.

# MoCADA Bklyn

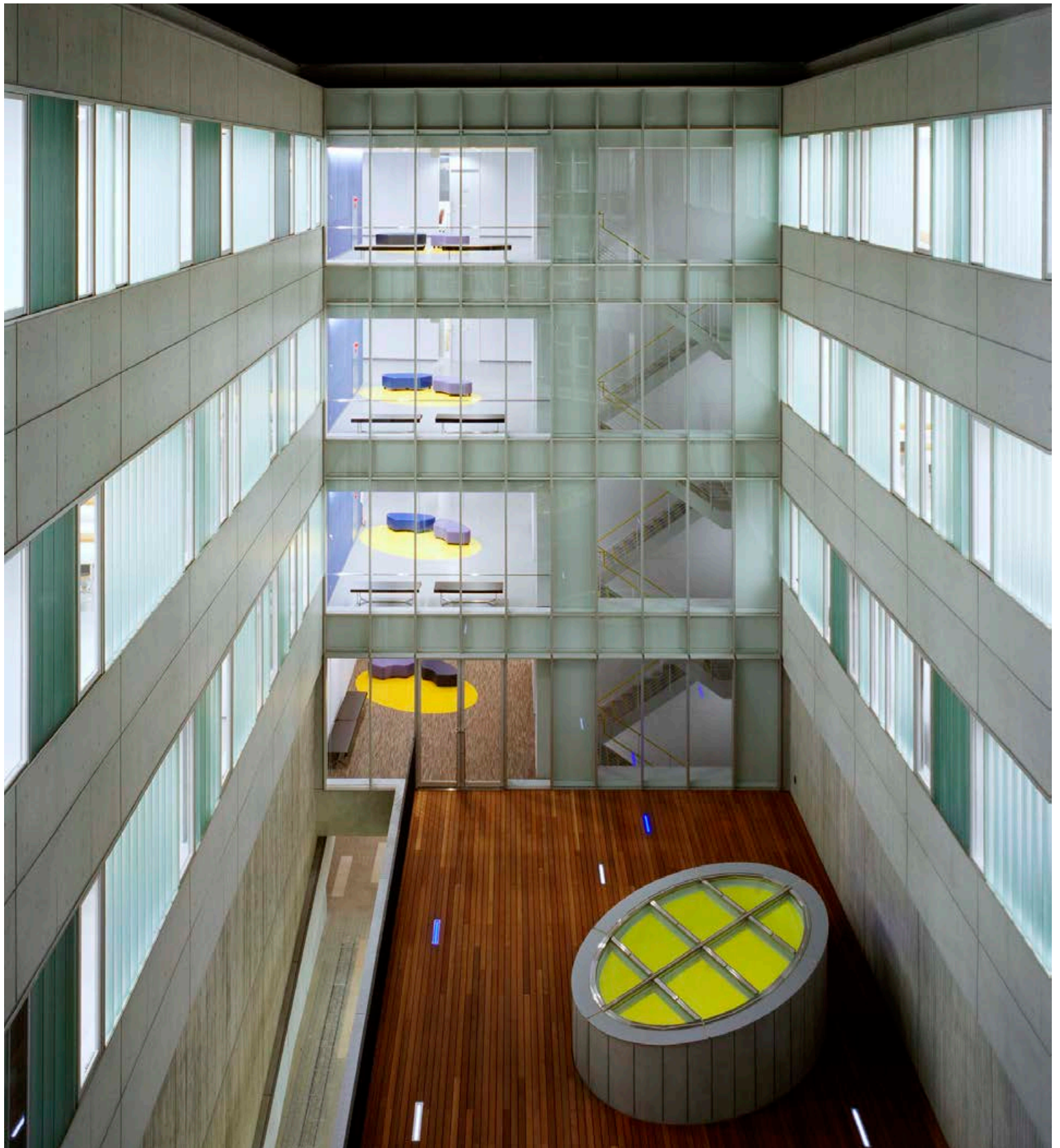






MoCADA Bklyn

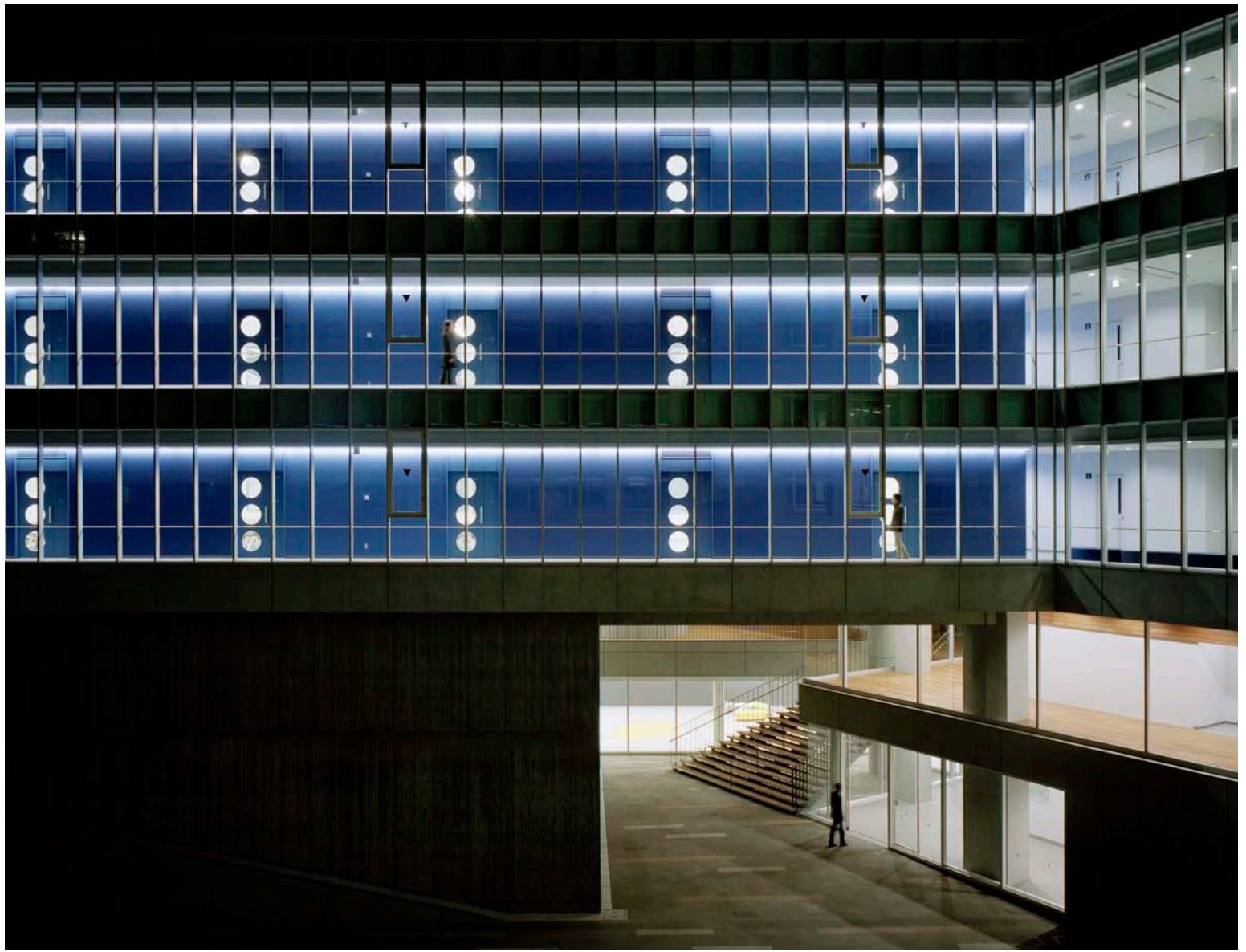




# Business School







Client:	Josai University
Location:	Sakado, Japan
Completion:	2007
Area:	70,000sf
Design Architect:	Studio SUMO
Arch't of Record:	Obayashi Corporation
Awards:	2008 AIA NY Chapter Building Type Design Award

# Business School





The Josai University Business School is a linear building that bends to meet a sloping landscape and is comprised of three wings connected by a bridge. From the exterior, the building is organized about public paths that connects the existing campus walkway to the hillside beyond through a series of informal interior and exterior public spaces. Framing the public paths, the slopes of two auditoria negotiate a 2-meter height differential and orient the public to the buildings center and raised exterior courtyard. There two oculi allow light to enter ground floor labs. The upper floors are organized by a continuous circulation spine adjacent to linear modularized classrooms and offices with spill-out areas for impromptu meetings or gatherings to encourage .

# Business School

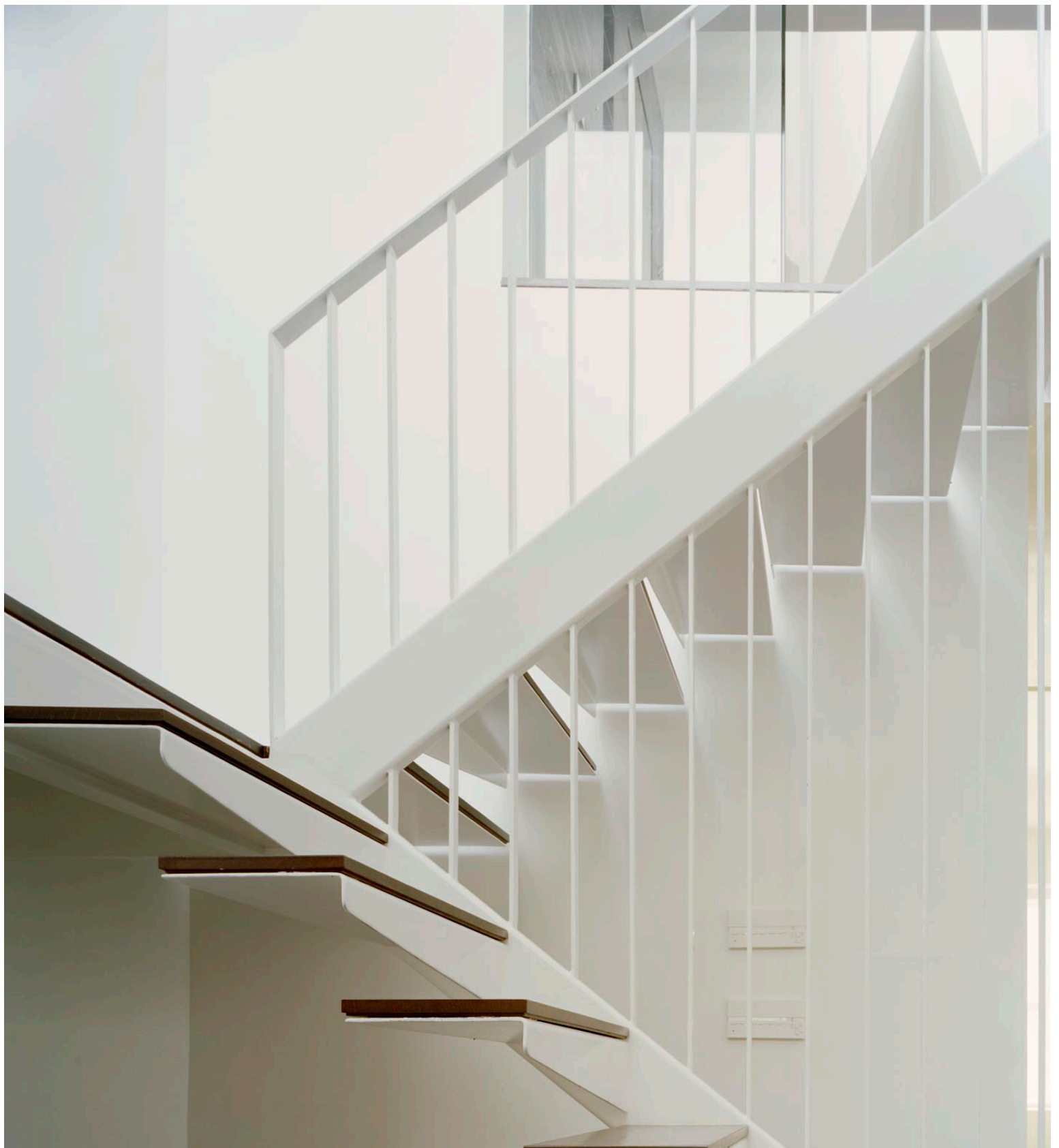






# Business School





# Harlem Duplex







Client:  
Location:  
Completion:  
Area:

Matthew Leaney  
New York, NY  
2010  
1,500sf

# Harlem Duplex



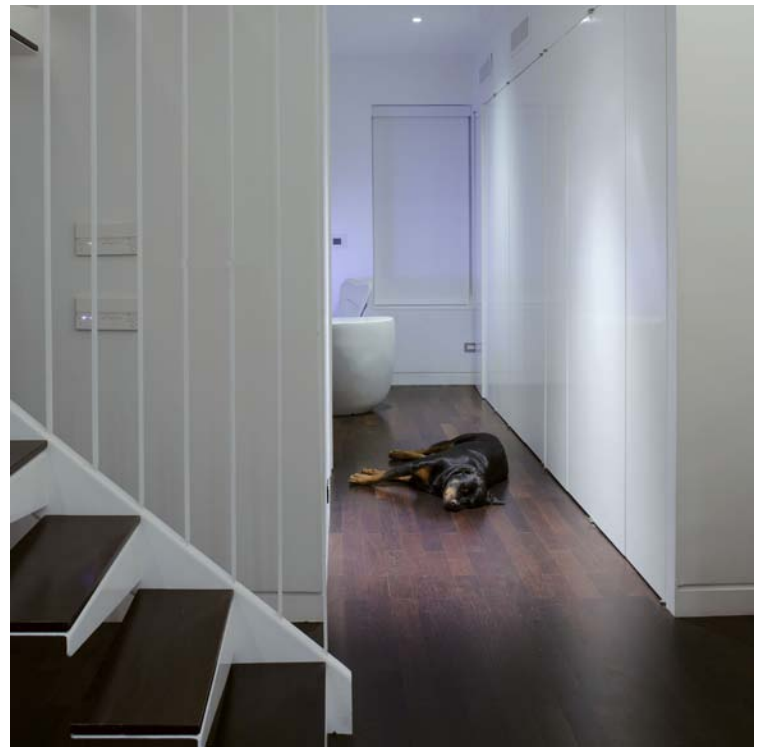
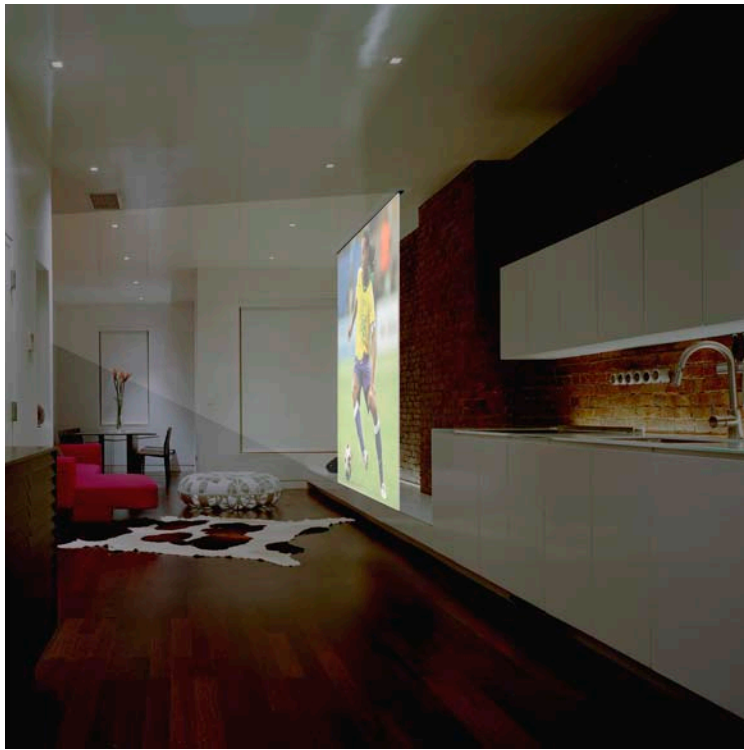


Located within the top two floors of an historic townhouse in the Hamilton Heights historic district of Harlem, the design of the apartment interiors and roof deck create a minimal retreat and gathering space. The design opened up previously compartmentalized spaces to allow for a sense of expansiveness accentuated by long views and skylights. Located at the perimeter, linear consoles contain domestic programs including: kitchen, entertainment equipment, storage, and toilets to maintain openness. Midpoint the apartment is split vertically to channel light along the restored ceiling and dormer of the historic building. The cut contains a light frame steel stair and bridges between the sleeping loft and roof deck above.

# Harlem Duplex







# Harlem Duplex

